



*Falwell Quilt #2, Shawn Quinlan, handpainted fabric, commercial fabrics, 2007. Courtesy of the artist*

## **SPECIAL WQ TOUR**

**Curator Tour of the "Man-Made:  
Contemporary Male Quilters" Exhibit,  
Saturday, April 18, 4:00 pm  
at the Craft & Folk Art Museum**

WQ Members are invited to attend a curator tour of this exhibition of quilts made by men. "Man-Made: Contemporary Male Quilters," the first museum exhibition of its kind in Los Angeles, examines the unique aesthetics and techniques that men bring to a craft long associated with feminine arts and labor.

Guests of Westside Quilters are welcome. This is a wonderful opportunity to invite husbands, sons and others to share in a very masculine expression of quilting arts. Space is limited, so please let us know if you and your guests are planning to come. RSVP to [WestsideQuilters@yahoo.com](mailto:WestsideQuilters@yahoo.com). Attendees are responsible for their own parking and admittance, \$7.00 for adults, and \$5.00 for students, teachers, seniors and veterans. For more information, here's a link to an LA Times article on the exhibit:

<http://www.latimes.com/entertainment/arts/la-et-cm-male-quilters-cafam-manmade-20150125-story.html#page=1>

## **PROGRAMS & WORKSHOPS**

Registration is still open, with available space, for this Saturday, April 11 workshop with Sharla Hicks, where she will be teaching us the art of "Zentangle: One Stroke At A Time." Zentangle is all the craze and you don't have to be able to draw to learn this amazing and relaxing art form. It is about what you create, with your own style and talent. At this workshop, participants will learn the art of Zentangle to boost confidence, learn how to focus and get in touch with your intuitive creativity while exploring (without intimidation) abstract designs that are uniquely yours. No two designs come out the same even when following the same theme and patterns.



Sharla is a Certified Zentangle Teacher who trained under Zentangle founders Rick Roberts and Maria Thomas in February 2011 and returned in June 2013. The daily practice



of Zentangle has had a profound effect on her discipline as an artist, her creative abilities, given back her love of teaching, and most significantly—Zentangle has helped her find her Artistic Voice. Sharla crosses the boundaries of expressive quilter, fiber artist,

mixed media, collage, writing, printmaking and more. Her current focus is offering the gift of Zentangle to others through workshops, classes and lectures around the world.

Please note we will not be sewing in class, though ways to use Zentangle in quilting will be discussed. We will only be drawing. The kit you are purchasing will provide you with all the supplies you need to get started, as well as an instruction booklet.

(cont. on page 2)

## **PROGRAMS & WORKSHOPS (cont. from page 1)**



It was almost spring and so appropriate that in March we were able to spend a day in a flower garden with Christen Brown taking her "Ribbonwork Garden" workshop. Who knew how easy it is to take inexpensive ribbons and with a few hand stitches turn them into beautiful blooms? Christen brought so many examples of how these flowers can be used that we were dazzled!

Further photos are up on the WQ website for inspiration.



And don't forget that on Friday, May 1, the entertaining and talented Charlotte Angotti will be joining us and bringing all the fabric and clues for one of her famous "Mystery Quilts!" This quilt is being specially designed just for this workshop and, as anyone who has taken a workshop with Charlotte knows, there is never a dull moment with Charlotte at the helm. This is one not to be missed!

Please e-mail [Programs@WestsideQuiltersLosAngeles.org](mailto:Programs@WestsideQuiltersLosAngeles.org) to register for any of these upcoming workshops.

Happy Quilting!

**Stephanie Horsley**

---

**Saturday, April 11, 2015 — 9:30am to 3:30pm**

**Sharla Hicks:**

**"Zentangle: Anything is Possible One Stroke at a Time"**



Zentangle to boost confidence with your drawing. Learn how to focus and get in touch with your intuitive creativity while exploring (without intimidation) abstract designs that are uniquely yours.

**Fee for Members: \$30.00    Fee for Non-Members: \$50.00**  
**\$12 kit fee, please include in your registration payment**



**Location: St. John's Presbyterian Church, Fellowship Hall**  
**11000 National Blvd., Los Angeles, CA 90064**

---

*(cont. on page 3)*

**Saturday, April 18, 2015 — 4:00pm**

**WQ Tour: “Man-Made: Contemporary Male Quilters”**



Attend a curated docent-led tour of this exhibition of quilts made by men at the Craft & Folk Art Museum. “Man-Made: Contemporary Male Quilters,” the first museum exhibition of its kind in Los Angeles, examines the unique aesthetics and techniques that men bring to a craft long associated with feminine arts and labor. RSVP to [WestsideQuilters@yahoo.com](mailto:WestsideQuilters@yahoo.com).

Members and guests responsible for own admittance and parking  
\$7.00 (adults), \$5.00 (students, teachers, seniors and veterans)



Location: Craft & Folk Art Museum  
5814 Wilshire Blvd., Los Angeles, CA 90036

---

**Friday, May 1, 2015 — 9:30am to 3:30pm**

**Charlotte Angotti: “Let Me Surprise You”**



Finally, a workshop that you know you have brought the right things for! In this entertaining and amazing class, a kit of CUT fabrics is furnished. This is a wonderful group workshop for those that just want to sew and not have cutting or thinking to do. This class is the most popular class Charlotte offers. It fills quickly and is a SURPRISE in more ways than one. No one gets any hints and each class is a different quilt.

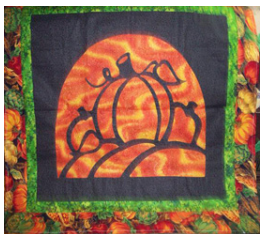
Fee for Members: \$60.00 (\$55 early registration by April 11)    Fee for Non-Members: \$75.00  
\$100 required kit fee, must be paid at time of registration

Location: Veteran’s Memorial Complex, Rotunda Room  
4117 Overland Avenue, Culver City, CA 90230

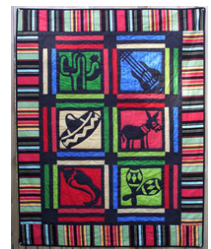
---

**Saturday, June 20, 2015 — 9:30am to 3:30pm**

**Jane Tenorio-Coscarelli: “Cut-away Applique”**



Come join the fun in this cut-away applique' class. Don't run away when we say reverse applique' - It's fun! With whole cloth or Hawaiian applique' techniques, learn how quick and easy it can be with the needle turn method. Eliminate all those extra steps in applique' - with a turn of the needle your design comes to life. Choose from two of Jane's designs pictured. Once you master the cutaway method you can move on to one of Jane's other classes that will be available for sale in the workshop.








Fee TBD

Location: Veteran’s Memorial Complex, Multipurpose Room  
4117 Overland Avenue, Culver City, CA 90230



# PROGRAM CALENDAR

April 11, 2015 Saturday	Workshop 	Sharla Hicks	<b>"Zentangle: Anything is Possible One Stroke at a Time"</b> Are you one of those who can only draw stick figures? This means you can draw lines, curves and circles? Then Zentangle is for you because it takes those shapes and step-by-step instruction that turns easy to do marks into abstract tangles and patterns.
April 18, 2015 Saturday	Tour 		<b>"Man-Made: Contemporary Male Quilters"</b> Attend a curated docent-led tour of this exhibition of quilts made by men at the Craft & Folk Art Museum. "Man-Made: Contemporary Male Quilters," the first museum exhibition of its kind in Los Angeles, examines the unique aesthetics and techniques that men bring to a craft long associated with feminine arts and labor.
May 1, 2015 Friday	Workshop 	Charlotte Angotti	<b>"Let Me Surprise You"</b> In this fun-filled class, a kit of CUT fabrics is furnished. This is a wonderful group workshop for those that just want to sew and not have any cutting or thinking to do. This class is the most popular class Charlotte offers. It fills quickly and is a SURPRISE in more ways than one. No one gets any hints and each class is a different quilt. All kits in class are the same. A relaxed day of laughter and sewing
May 2, 2015 Saturday	GENERAL MEETING 	CHARLOTTE ANGOTTI	Charlotte Angotti will present <b>"Your Stash, My Stash! --design, color, collections and quilts--"</b> A humorous and light lecture full of information and real quilts. The lights are on and the ideas will be flowing. Questions are welcome and be ready to laugh!
June 20, 2015 Saturday	Workshop 	Jane Tenorio-Coscarelli	<b>"Cut-Away Applique"</b> Come join the fun in this cut-away applique' class. Don't run away when we say reverse applique' - It's fun! With whole cloth or Hawaiian applique' techniques, learn how quick and easy it can be with the needle turn method. Eliminate all those extra steps in applique' - with a turn of the needle your design comes to life. Choose from two of Jane's designs pictured. Once you master the cutaway method you can move on to one of Jane's other classes that will be available for sale in the workshop.

## To Register for a Workshop:

At the **WQ website**, choose *Calendar* and scroll down to individual workshops. See the link to the Workshop Registration Form (which you can fill in on-line and then print) and the supply list. **First**, please email [Programs@WestsideQuiltersLosAngeles.org](mailto:Programs@WestsideQuiltersLosAngeles.org) of your intent to attend a workshop. **See the workshop no-refund policy (substitutions allowed) shown on the Workshop Registration Form.** WQ will hold your space at the workshop for 14 days to allow time to mail Workshop Registration Form and payment to the WQ post office box. For last-minute registrations, contact Program Chair ASAP. **Credit cards/debit cards now accepted. Note Early Registration discounts available 30 days or more before workshops.**

## Quarterly Meetings:

WQ members attend at no charge. Non-members are welcome for a \$10.00 guest fee. **Meetings at St. John's Presbyterian Church, 11000 National Boulevard at Military (3 blocks East of Sepulveda), Los Angeles, 90064.**

## Workshops:

Fees vary. Note early registration discounts may apply. Non-members pay a \$15.00 surcharge.  
**Workshop locations vary. 9:30 am to 3:30 pm unless stated otherwise.**



## ***PRESIDENT'S MESSAGE***

We are closing in on Westside Quilters' calendar year, which means that several Board positions will be opening June 1 due to our two- year limitation to serve in any one position. I hope all guild members will be receptive if Roberta Walley calls upon you to serve in a position, and that you reply with enthusiasm and a willingness to volunteer!

On another note, we have two workshops open for registration as described in our newsletter and on our website. Sharla Hicks "Zentangle" on April 11, and Charlotte Angotti "Let Me Surprise You" Mystery Quilt on May 1.

Sharla Hicks' "Zentangle" is teaching a unique drawing class, which is known as a relaxing art form. We are opening this workshop to additional participants so please feel free to invite family members, neighbors or anyone who would enjoy an easy and fun drawing form. The charge is \$42, which includes a \$12 kit fee. The workshop is being held at St. John's Presbyterian Church (please use our normal protocol for registering).

Our last workshop of the year is Charlotte Angotti's "Let Me Surprise You" mystery quilt on May 1. Ms. Angotti has created a mystery quilt for our guild with colors chosen by our Program chair. The workshop fee is \$60 and \$100 for the kit. Yes, the kit fee is high but remember all the fabric needed for this project (top only) is included and will be pre-cut. All you have to do is show up with your sewing machine and miscellaneous sewing supplies, and enjoy the wonderful Charlotte Angotti at the helm.

Also, if you went to Asilomar, please consider sending an article to Newsletter editor **Lisa Redmond** about your Empty Spools experience.

I don't know about the rest of you but I am certainly enjoying the additional daylight hours. Hope to see you at the Zentangle workshop this Saturday!

**Perla Rothenberg**

Blessed are the children of the quilters,  
for they shall inherit the  
quilts.




## ***APRIL BIRTHDAYS***

Pepper Libow	4/1
Lita Greenberg	4/6
Dorothy Akiyama	4/13
Jody Brkich	4/15
Ron Tapp	4/22
Pat Bryan	4/26

## ***MEMBERSHIP***

We happily welcome our new member **Sharon Kelm** of West LA, bringing our membership to 88.

Also... a reminder that our new 2015-16 Membership year begins on June 1. At our May 2 quarterly meeting, Membership Forms will be available so that you can fill them out and your WQ membership will go on seamlessly. Just remember to bring a checkbook or credit card!

facebook	Name:	Westside Quilters
	 WESTSIDE QUILTERS	

### Westside Quilters Online

Just a reminder to our newer members and the Membership at large to "Like" Westside Quilters on Facebook. There is a lot of great information about our programs as well as the quilting world at large posted there. Get connected!

<https://www.facebook.com/pages/Westside-Quilters/101741806552830>

**Sally Wright**

## TREASURER'S REPORT

At the March 21 Executive Board meeting, two charities were selected to receive WQ's 2015 donations: Las Familias del Pueblo in the amount of \$300, and St. John's Presbyterian Church in the amount of \$200. If any member objects to these donations, or have other deserving organizations to suggest, please contact the Treasurer.

The Executive Board also discussed escalating Program costs. New guidelines were approved for teacher/speaker contracts. For future workshops, expenses will be calculated to allow maximum registration fees of \$70. Also, out-of-town teachers/speakers will be asked not to use hotels but rather to stay in a WQ member's home. These guidelines can be over-ridden on an exception basis by the Executive Board. WQ's goal is to continue to present innovative programming within a cost-effective structure.

WQ donated \$200 to a charity in May 2014, and later sent a replacement check when the first check wasn't cashed. WQ incurred expense for stop-payment orders. The Executive Board voted not to issue another replacement check.

<b>Opening Balance 2/28/2015</b>		<b>\$6,455.23</b>
Voided check for uncashed Charitable contribution		\$ 200.00
<b>INCOME</b>		
Membership Dues	\$ 30.00	
Workshop Fees	1,258.69	
Amazon	46.75	
<b>TOTAL INCOME</b>		<b>\$1,335.44</b>
<b>EXPENSE</b>		
Road to Calif. Exhibition expense	(\$153.70)	
Workshop fee and travel 3/14 (C. Brown)	(597.20)	
Speaker advance airfare 5/1-2 (C. Angotti)	(573.20)	
Credit card fees	(11.34)	
<b>TOTAL EXPENSE</b>		<b>(1,335.44)</b>
<b>SUBTOTAL</b>		<b>\$6,655.23</b>
Materials fees holding for workshop teachers:		
Hicks 4/11 (20 paid @ \$12)		(240.00)
Angotti 5/1 (11 pd. @ \$100)		(1,100.00)
<b>Closing Balance 3/25/2015</b>		<b>\$5,315.23</b>

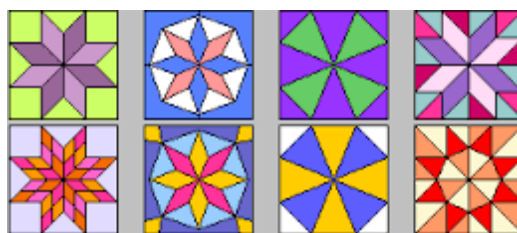
**Tina Nord**

## LEADERSHIP

It is my time to thank all of you who have served on the board of Westside Quilters. Your service and leadership helps us continue to give to our community. We are so proud of our educational and philanthropic efforts.

As the new calendar approaches I will once again be asking for your help. Please consider taking a leadership position and serving on the board of Westside Quilters. I promise your contributions will be rewarding, and you will have the sense of accomplishment and community.

**Roberta Walley**



## PHILANTHROPY

Our November Philanthropy workshop is the gift that keeps on giving. We now have about 10 children's quilts that have come in since the workshop that we will be delivering to Para Los Ninos (PLN). Last December when we delivered quilts to PLN, the staff explained that the children keep their quilts as they advance on to the next level of the Early Education Program. That means that each child will eventually take a quilt home, and in turn, PLN will continually be making good use of all the children's quilts they receive.

Of course, Las Familias del Pueblo always has good homes for all the quilts we deliver to them.

KEEP IN MIND THAT THERE IS A NEVER ENDING NEED FOR CHILDREN'S QUILTS. So you don't have to wait for the November workshop to turn in a child's quilt for donation. If you're in the mood to work on a little project or are looking for a good reason to complete a small UFO, think of us and we will find a good home for your charity quilt.

And never forget that WQ provides scholarships to WQ workshops. If you know anyone not in the guild that might like or would benefit from a particular class, please let us know. They can be a youngster, neighbor or teacher; it's a wonderful way to introduce people to quilting.

We truly appreciate everyone's charity efforts!

**Tanya Heldman and Debbie Nussbaum**



## Winner! Winner! Chicken Dinner!



Congratulations to our own **Evi Newmann**, whose "My Blue and White Passion" quilt won Best of Show at the 2015 Glendale Quilt Guild Show last month!

Evi was especially excited when she received the call of her win, having never entered a quilt show before. She was inspired to enter her quilt after reading the September 2014 WQ Newsletter which included a special feature on how to enter a quilt show. (Past WQ Newsletters are readily available on the WQ website.)



Perhaps you're now inspired as well. Like Evi, it's never too late to consider entering a quilt into a competition. Listed below are upcoming shows/competitions to consider entering. Simple Google searches turn up more quilt competitions than can be listed.

- **California State Fair** — The entry deadline is April 29 at 5:00pm. For additional information, contact [crafts@calexpo.com](mailto:crafts@calexpo.com) or call 916-263-3161. [www.castatefair.org/crafts/](http://www.castatefair.org/crafts/)
- **AQS QuiltWeek** — The American Quilting Society has two more shows to enter for 2015, Chattanooga and Des Moines. <http://www.quiltweek.com/wp-content/uploads/2015-Contest-Rules.pdf>
- **Sisters Outdoor Quilt Show** — Registration deadline to enter a quilt is June 1, or when the show is filled. [www.sistersoutdoorquiltshow.org/quilt-entry/](http://www.sistersoutdoorquiltshow.org/quilt-entry/)
- **LA County Fair** — What's more traditional than entering your local county fair? A great beginner way to enter a competition. Deadline is June 23, 2015. [www.lacountyfair.com/competitions/](http://www.lacountyfair.com/competitions/)
- **Quilt Expo** — You have till June 30 for the September 2015 show. <http://wiqultexpo.com/quiltcontest>
- **2015 Hoffman Challenge** — There's still time on this one for the Orange County fabric manufacturer; the deadline is July 17, 2015. <http://www.hoffmanfabrics.com/content/content-article.asp?ArticleID=149>
- **Road to California** — Details for entry into the 2016 show have not been announced yet, but typical deadline for the January show is October 1. Keep your eyes open! [www.road2ca.com](http://www.road2ca.com)
- **QuiltCon** — The Modern Quilt Guild's 2016 show will be held in Pasadena, February 18-21. You must be a member to enter. Entry registration is open July 1 through November 30. [www.quiltconentry.com](http://www.quiltconentry.com)
- **ArtCall** — This website mostly lists Art Quilt/Fiber Art competitions, but there are others. A great resource. <http://artcallforentries.com/>



# A NEIGHBORLY GUILD CALENDAR

## APRIL

<b>April 11</b> <b>Westside Quilters</b> <a href="http://www.WestsideQuiltersLosAngeles.org">www.WestsideQuiltersLosAngeles.org</a>	<b>Sharla Hicks</b> <b>April 11 Workshop: "Zentangles"</b>
April 12-13 <b>San Fernando Valley Quilt Association</b> <a href="http://www.sfvqa.net">www.sfvqa.net</a>	<b>Jennifer Rapacki</b> April 12 Workshop: "Create Custom Fabrics - Weaving" April 13 Program: "Creativity Unleashed – Modern Quilting Technology"
April 12-13 <b>Flying Geese Quilters Guild</b> <a href="http://www.flying-geese.org">www.flying-geese.org</a>	<b>Mary Lou Weidman</b> April 12 Workshop: "Art Quilt – Flower Power" April 13 Program: "Art Quilts – Creativity and You"
April 14 & 18 <b>Orange County Quilters Guild</b> <a href="http://www.orangecountyquiltersguild.com">www.orangecountyquiltersguild.com</a>	<b>Mary Lou Weidman</b> April 14 Program: "Creative YOU" April 18 Workshop: "Autumn Winds"
April 15 <b>LA County Quilters Guild</b> <a href="http://www.quiltguildla.org">www.quiltguildla.org</a>	<b>Andi Perejda</b> April 15 Program: "Quilting Designs: Styles and Textures"
April 17-18 <b>South Bay Quilters Guild</b> <a href="http://www.southbayquiltersguild.org">www.southbayquiltersguild.org</a>	<b>Jean Impey</b> April 17 Program: "Finding Your Passion and Running With It" April 18 Workshop: "Spider Webs"
<b>April 18</b> <b>Westside Quilters</b> <a href="http://www.WestsideQuiltersLosAngeles.org">www.WestsideQuiltersLosAngeles.org</a>	<b>TOUR</b> <b>Curator tour of the "Man-Made: Contemporary Male Quilters" exhibit at the Craft &amp; Folk Art Museum</b>
April 19-20 <b>Conejo Valley Quilters</b> <a href="http://www.conejovalleyquilters.com">www.conejovalleyquilters.com</a>	<b>Luke Haynes</b> April 19 Workshop: "Log Condo: A New Take on the Classic Log Cabin Quilt" April 20 Program: "Trunk Show"

## MAY

<b>May 1-2</b> <b>Westside Quilters</b> <a href="http://www.WestsideQuiltersLosAngeles.org">www.WestsideQuiltersLosAngeles.org</a>	<b>Charlotte Angotti</b> <b>May 1 Workshop: "Let Me Surprise You"</b> <b>May 2 Program: "Your Stash! My Stash! *design, color, collections and quilts**"</b>
May 6 <b>Santa Monica Quilt Guild</b> <a href="http://www.santamonicaquiltguild.org">www.santamonicaquiltguild.org</a>	<b>Stephania Bommarito</b> May 6 Program: "Trunk Show" April 2 Workshop: "Landscapes"
May 10-11 <b>San Fernando Valley Quilt Association</b> <a href="http://www.sfvqa.net">www.sfvqa.net</a>	<b>Annie Smith</b> May 10 Workshop: "Absolutely Essential Machine Applique" May 11 Program: "Keeping Your Legacy Alive"
May 11-12 <b>Flying Geese Quilters Guild</b> <a href="http://www.flying-geese.org">www.flying-geese.org</a>	<b>Orion Burns</b> May 11 Program: "Tribute to Mom – Traditional" May 12 Workshop: "Modern Migration"
May 12-13 & 16 <b>Orange County Quilters Guild</b> <a href="http://www.orangecountyquiltersguild.com">www.orangecountyquiltersguild.com</a>	<b>Robin Gallagher</b> May 12 Program: "Making a Difference Through Quilting" May 13 Wrkskp: "Magical Slice and Dice" - May 16 Wrkskp: "In and Out (Not just a burger)"
May 13 & 16 <b>Glendale Quilt Guild</b> <a href="http://www.glendalequiltguild.org">www.glendalequiltguild.org</a>	<b>Grace Errea</b> May 13 Program: "Trunk Show" May 16 Workshop: "Intro to Heat-Set Machine Applique"
May 16-18 <b>Wearable Art Connection</b> <a href="http://www.wearableartconnection.org">www.wearableartconnection.org</a>	<b>Youngmin Lee</b> May 16 Program: "Bojagi" May 17-18 Workshop: "Patchworked Bojagi"



## ***OUT AND ABOUT***

- ✂ **Now through May 3 — Man-Made: Contemporary Male Quilters** Craft & Folk Art Museum, 5814 Wilshire Blvd., Los Angeles 90036  
[www.cafam.org](http://www.cafam.org)
- ✂ **Now through July 5 — A Common Thread: Stitching and Embroidery** San Jose Museum of Quilts & Textiles  
<http://www.sjqiltmuseum.org/>
- ✂ **April 10-11 — Echoes of the Past** Presented by the Orange County Quilters Guild in Anaheim, Quilters' Garage Sale, Classes that include Calligraphy on Fabric, English Paper Piecing, Pentagon Ball, Hand-dyed Silk Scarves and Sewing with Selvedges, Vendors, Demonstrations, free up-close parking, Featured Artist Pam Gayle, Presale \$8 – At the Door \$10 (Good for both days), 10 – 4, Quilters' Garage Sale opens at 9am, <http://orangecountyquiltersguild.com/pages/calendar/annual-events.php>
- ✂ **April 10-12 — The Best of the Valley** A regional show of quilts and cloth dolls, Friday/Saturday 10-5, Sunday 10-4, CeCe Westerfield of Bakersfield is the featured artist, admission \$10 a day/\$15 for a three-day pass/under 12 free, McDermont Field House, 365 N. Sweet Brier, Lindsay, CA 93247 [www.botvquilts.com](http://www.botvquilts.com)
- ✂ **April 25 — Meet the Teachers** Carson Community Center, 801 E. Carson St., Carson, CA <http://www.sccqg.org/meetings/>
- ✂ **June 13-14 — Sierra Blooms Quilt Show** presented by the Sierra Mountains Quilters Association, Saturday 10-5, Sunday 10-4, admission \$8, Oakhurst Community Center, 39800 Road 425B, Oakhurst, CA [www.sierramountainquilters.org](http://www.sierramountainquilters.org)
- ✂ **July — Road to California** Early July: class information available, Mid July Registration for January 2016 classes begins  
[www.road2ca.com](http://www.road2ca.com)
- ✂ **July 10-26 — 2015 California State Fair** Sacramento, CA [www.castatefair.org](http://www.castatefair.org)
- ✂ **July 11 – November 1 — Found/Made** San Jose Museum of Quilts & Textiles <http://www.sjqiltmuseum.org/>
- ✂ **July 11 — Sisters Outdoor Quilt Show** 40<sup>th</sup> Anniversary, multiple activities and classes the week of, Sisters, Oregon  
[www.sistersoutdoorquiltshow.org](http://www.sistersoutdoorquiltshow.org)
- ✂ **August — Education of Textile Arts Sew Expo** Registration begins early August for late October event at the Irvine Hotel, Irvine, CA  
[www.etasewexpo.com](http://www.etasewexpo.com)
- ✂ **September 4-27 — La County Fair** Pomona Fairplex [www.lacountyfair.com](http://www.lacountyfair.com)
- ✂ **October 3 — Outdoor Quilt Show** presented by Valley of the Mist Quilters Guild and the City of Temecula, Saturday 10-4, Free. Temecula [www.valleyofthemistquilters.com](http://www.valleyofthemistquilters.com)
- ✂ **October 8-10 — Oasis Quilt Fest** Palm Springs Convention Center [www.quiltfest.com](http://www.quiltfest.com)
- ✂ **October 8-10 — Quilt, Craft & Sewing Festival** at the Fairplex in Pomona, CA. Free seminars and workshops, \$10 for 3 days  
[www.quiltcraftsew.com/pomona.htm](http://www.quiltcraftsew.com/pomona.htm)
- ✂ **October 24-26 — Education of Textile Arts Sew Expo** Irvine Hotel, Irvine, CA [www.etasewexpo.com](http://www.etasewexpo.com)
- ✂ **January 20-24, 2016 — Road to California Quilt Show** Ontario Convention Center, Ontario, CA [www.road2ca.com](http://www.road2ca.com)

If you know of events, sales, new stories or anything else that should be included on this page, please send to  
[Newsletter@WestsideQuiltersLosAngeles.org](mailto:Newsletter@WestsideQuiltersLosAngeles.org)

## Next Executive Board Meeting

The next meeting of the Executive Board will be held April 26, 2015.  
All members of Westside Quilters are welcome to attend with prior notice to  
[Pres@WestsideQuiltersLosAngeles.org](mailto:Pres@WestsideQuiltersLosAngeles.org).

### Our Mission

A new kind of guild organized for educational and charitable purposes; to promote cooperation and the exchange of ideas among quilters; to instruct members in methods and techniques of traditional and contemporary creative quilting; to serve mini-groups and their philanthropic endeavors within the community; to inspire personal achievement.

### Officer

President	Perla Rothenberg
Vice President	Roberta Walley
Secretary	Lisa Drew
Acting Treasurer	Tina Nord
Program	Stephanie Horsley
Membership	Sally Wright
Newsletter	Lisa Redmond
Philanthropy Co-Chairs	Debbie Nussbaum and Tanya Heldman
Website Manager	Sally Wright

### Appointed Positions

Hospitality	Sally Madigan and Bobbi Leung
Meeting Set-Up/Take-Down	Stephanie Wexler and Ann Chach
Photographer	Tanya Heldman
President Emeritus	Tina Nord

**Mailing Address**      Post Office Box 641925  
Los Angeles, CA 90064

**F.E.I.N.** 27-3145733  
(Federal Employer Identification Number)

**Website**      [www.WestsideQuiltersLosAngeles.org](http://www.WestsideQuiltersLosAngeles.org)

**Facebook**    We're on Facebook. Check out the banner on the WQ website home page (lower center).

**Amazon**    There is a boxed message in the lower center of our website home page giving a direct link to Amazon. By using this link, anything you purchase earns a 4% "dividend" paid directly to WQ. *This only works if you enter the Amazon website from the WQ website link.*

**iGive.com**    This is another way to benefit WQ when shopping on the Internet. Here you need to register (the iGive.com logo appears in the lower center on the WQ website home page and links you directly to iGive.com). More than 800 Internet retailers participate (Barnes & Noble, Bed Bath & Beyond, Enterprise Rent-A-Car, Lancome -- to name a few). Follow the instructions at iGive.com.

**Non-Profit Status**    Westside Quilters is tax-exempt from Federal income tax under section 501(c)(3) of the Internal Revenue Code, and classified as a public charity under section 170 of the Code, according to the determination letter dated May 26, 2011 received from the Internal Revenue Service. The effective date of exemption is June 17, 2010. Donations to **Westside Quilters** are fully tax-deductible for individuals and other entities such as corporations, partnerships, trusts; **Westside Quilters** is qualified to accept tax deductible bequests and gifts or transfers of gifts.